

# Muth Woods Addition

A part of the NE 1/4 of the SE 1/4 TOGETHER WITH Lot 13 Block 5 and Outlots 2 & 3, Block 5, and Outlot 3, Block 7 of Forest Highlands Addition No. 2, a subdivision being a part of the NW 1/4 of the SE 1/4 and part of the NE 1/4 of the SE 1/4, all in Section 24, Town 11 North, Range 19 East, City of West Bend, Washington County, Wisconsin.

Total plat boundary = 23.24 acres (881,561 square feet)

Dated this 12th day of November, 2002.  
Revised this 22nd day of November, 2002.  
Revised this 2nd day of December, 2002.  
Revised this 12th day of December, 2002.

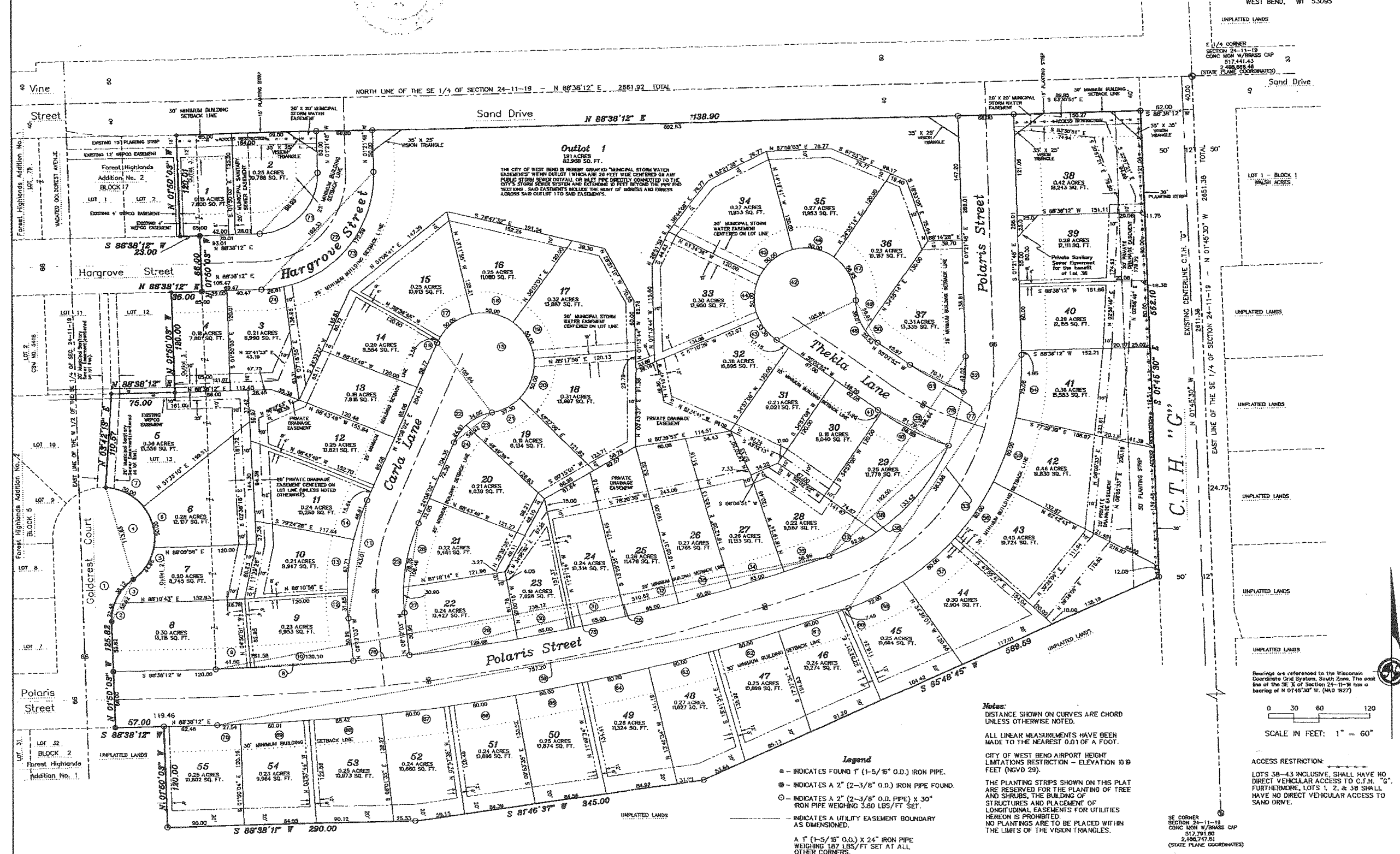
*Ronald A. Weis*  
Ronald A. Weis, S-1215  
Registered Land Surveyor



APPROVING AUTHORITY:  
CITY OF WEST BEND

OBJECTING AGENCY:  
DEPARTMENT OF ADMINISTRATION  
WASHINGTON COUNTY PLANNING,  
CONSERVATION, & PARKS DEPARTMENT

OWNER/SUBDIVIDER:  
CITIZENS/WEIS CORPORATION,  
WLM DEVELOPMENT, LLC  
& DS PETERS BUILDERS, INC.  
30 B E. PROGRESS DRIVE, SUITE 2  
WEST BEND, WI 53095



Notes:  
DISTANCE SHOWN ON CURVES ARE CHORD UNLESS OTHERWISE NOTED.  
ALL LINEAR MEASUREMENTS HAVE BEEN MADE TO THE NEAREST 0.01 OF A FOOT.

CITY OF WEST BEND AIRPORT HEIGHT LIMITATIONS RESTRICTION - ELEVATION 10.9 FEET (NGVD 29).

THE PLANTING STRIPS SHOWN ON THIS PLAT ARE RESERVED FOR THE PLANTING OF TREE AND SHRUBS. THE BUILDING OF STRUCTURES AND PLACEMENT OF LONGITUDINAL EASEMENTS FOR UTILITIES HEREON IS PROHIBITED.

NO PLANTINGS ARE TO BE PLACED WITHIN THE LIMITS OF THE VISION TRIANGLES.

- Legend**
- INDICATES FOUND 1" (1-5/16" O.D.) IRON PIPE.
  - INDICATES A 2" (2-3/8" O.D.) IRON PIPE FOUND.
  - INDICATES A 2" (2-3/8" O.D.) PIPE X 30" IRON PIPE WEIGHING 3.80 LBS/FT SET.
  - INDICATES A UTILITY EASEMENT BOUNDARY AS DIMENSIONED.

A 1" (1-5/16" O.D.) X 24" IRON PIPE WEIGHING 1.87 LBS/FT SET AT ALL OTHER CORNERS.

Bearings are referenced to the Wisconsin Coordinate Grid System, South Zone. The east line of the SE 1/4 of Section 24-11-19 has a bearing of N 01°45'30" W. (NAD 83)

0 30 60 120  
SCALE IN FEET: 1" = 60'

ACCESS RESTRICTION:  
LOTS 38-43 INCLUSIVE, SHALL HAVE NO DIRECT VEHICULAR ACCESS TO C.T.H. "G". FURTHERMORE, LOTS 1, 2, & 38 SHALL HAVE NO DIRECT VEHICULAR ACCESS TO SAND DRIVE.

SE CORNER SECTION 24-11-19  
CONC MON W/BRASS CAP  
S17,791.80  
2,446,747.81  
(STATE PLANE COORDINATES)